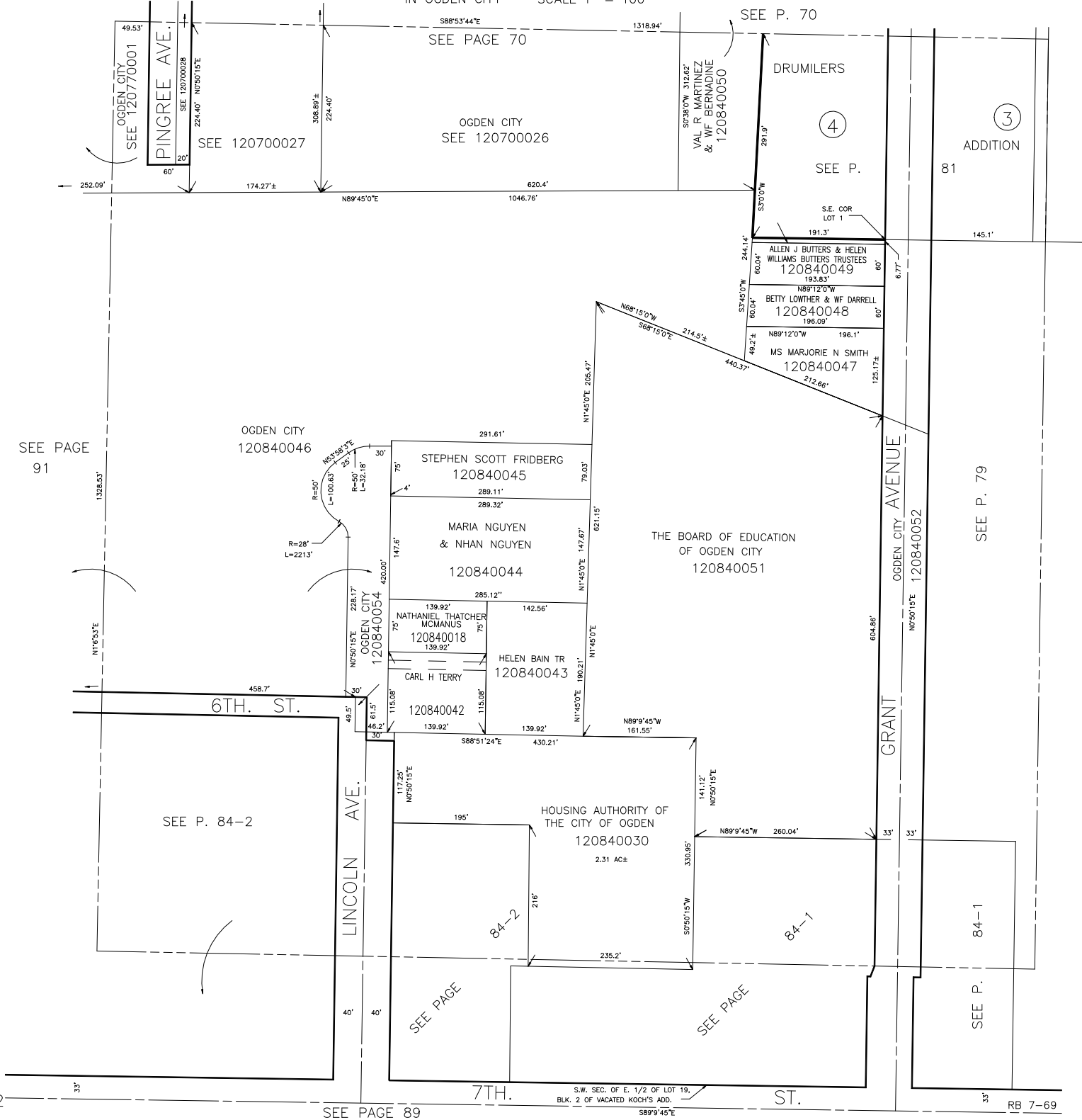


N.W. 1/4 OF S.E. 1/4 OF
SECTION 17, T.6N., R.1W., S.L.B.&M.
IN OGDEN CITY SCALE 1" = 100'

TAXING UNIT: 25



SEE PAGE
91

SEE P. 84-2

SEE PAGE

SEE PAGE

SEE P.

SEE PAGE 89

S.W. SEC. OF E. 1/2 OF LOT 19,
BLK. 2 OF VACATED KOCH'S ADD.
S89°45'E

RB 7-69